

# FAIRFIELD'S LACUNA PLAT 5

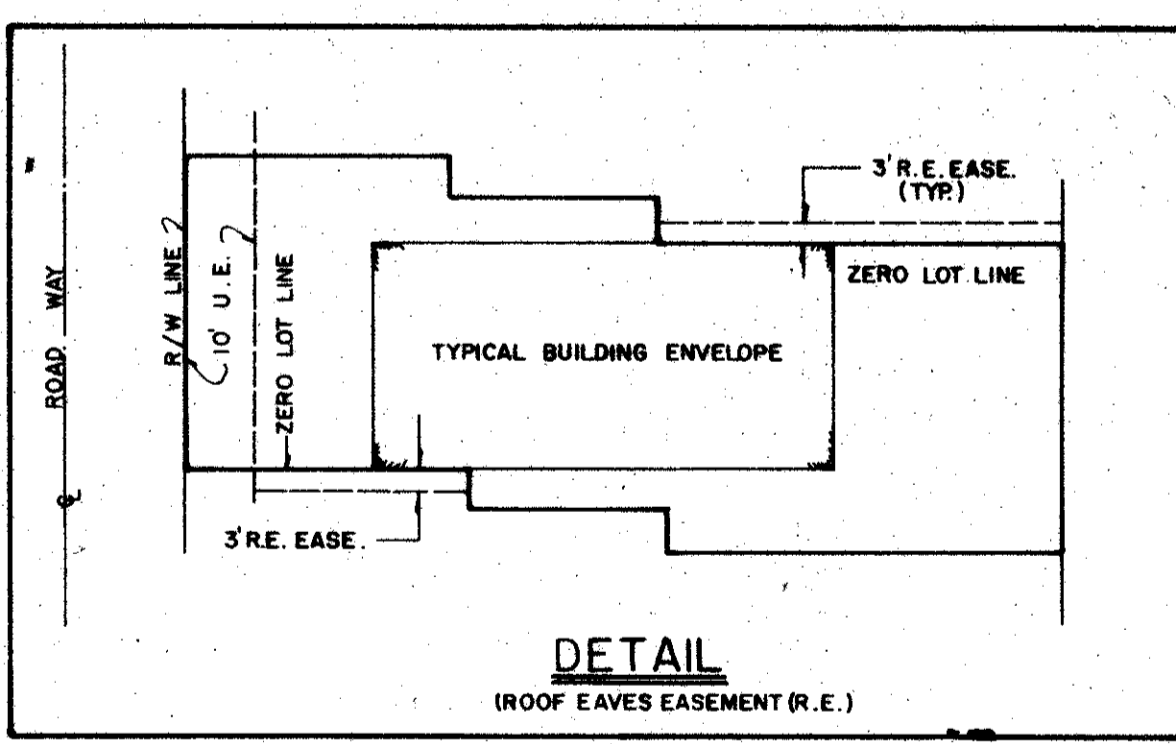
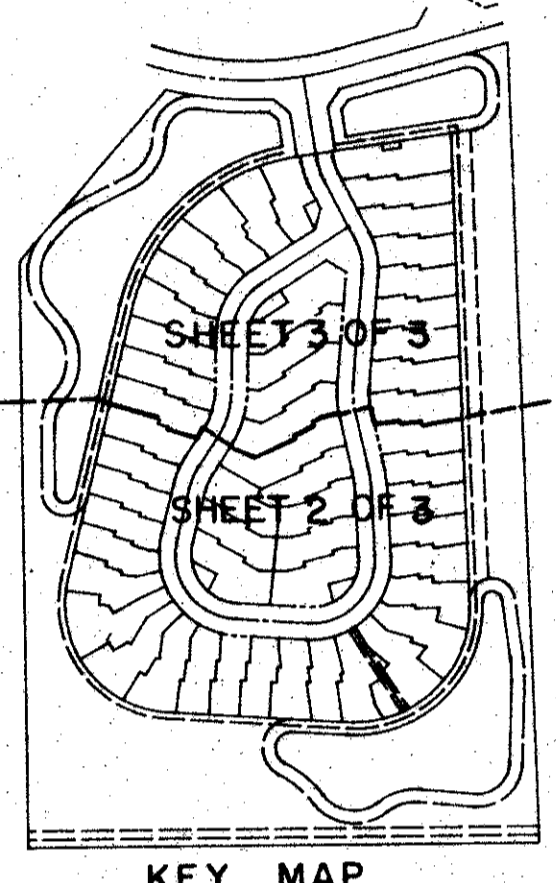
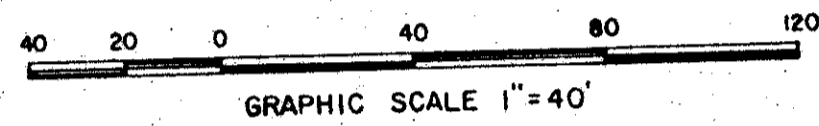
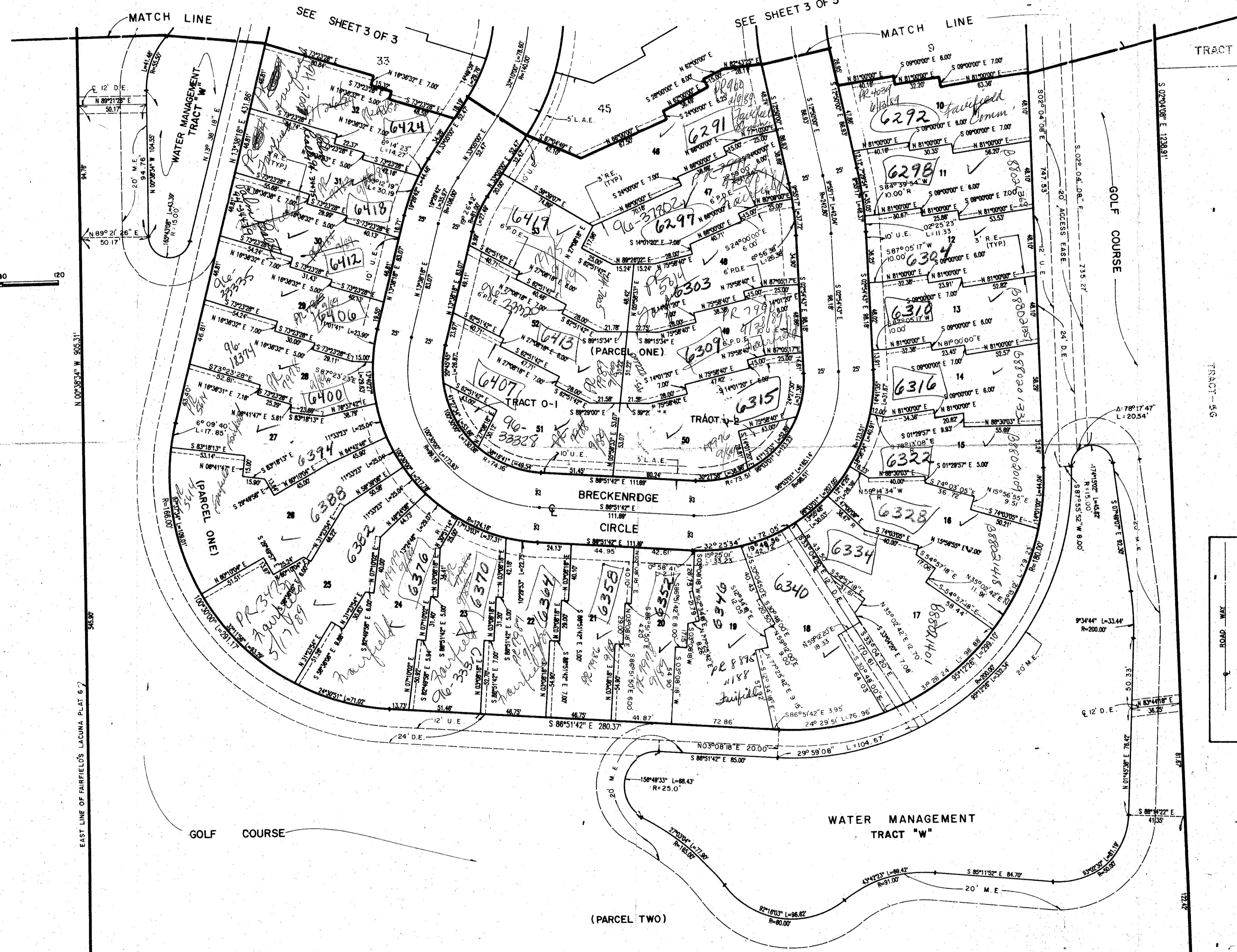
A PART OF BALMORAL COUNTRY CLUB P.U.D.  
PALM BEACH COUNTY, FLORIDA.

SHEET 2 OF 3

AUGUST, 1988

**138**

STATE OF FLORIDA  
COUNTY OF PALM BEACH SS  
This Plat was filed for record at \_\_\_\_\_  
M. this day of \_\_\_\_\_ 19\_\_\_\_  
and duly recorded in Plat Book No. \_\_\_\_\_  
on Page \_\_\_\_\_  
John B. Dunkle, Clerk of the Circuit Court  
By \_\_\_\_\_ D.C.



- NOTES:**
- (1) ALL LINES HEREON ARE NON-RADIAL UNLESS OTHERWISE NOTED (R-RADIAL)
  - (2) ALL WATER MANAGEMENT TRACTS (TRACT "W") TO BE MAINTAINED BY LACUNA HOME OWNERS ASSOCIATION INC. INCLUDING THE 20.00 FOOT MAINTENANCE EASEMENT SURROUNDING SAID WATER MANAGEMENT TRACT(S) PERIMETER.
  - (3) ROOF EAVES EASEMENT (R.E.) ADJACENT TO ZERO LOT LINES TYPICAL UNLESS OTHERWISE NOTED.

*Pet. 81-233*

**60/138**  
**0199-005**

Handwritten notes in a box:  
FOR NAME BALMORAL CC NO. 3  
DATE 5/15/12  
BY 33467  
RECORD 33467  
FILED IN PLAT BOOK 138 PAGE 1108

FAIRFIELD'S LACUNA PLAT 6  
(PB. 58, PGS. 142-145)

FAIRFIELD'S LACUNA PLAT 5  
(PB. 58, PGS. 142-145)

SW. COR. OF TRACT 53,  
BLOCK 37, PALM BEACH  
FARMS CO. PLAT NO. 3  
(PB. 2, PGS. 45-54)

P.O.B.  
S.E. CORNER FAIRFIELD  
LACUNA PLAT-5  
(PB. 58, PGS. 142-145)  
500.00'

**Landmark Surveying & Mapping Inc.**  
1850 FOREST HILL BOULEVARD  
PH. (202) 262-5400 FAX (202) 262-1100 W.P.B. FLORIDA

**FAIRFIELD LACUNA PLAT-5**